



Madera Community College 2035: Education Plan

Commission Workshop #1
August 28, 2025

AGENDA

Welcome and Introductions

Project Overview and Commission Role

- Planning for Success
- Project Overview
- Planning Roadmap
- Commission Role and Responsibilities

Discussion

- Integrated Planning Term Definitions
- Values, Vision, and Mission Input from Opening Day Session

Next Steps

Planning for Success



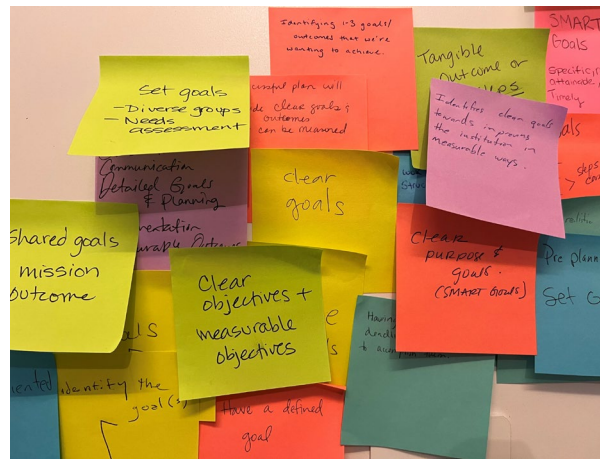
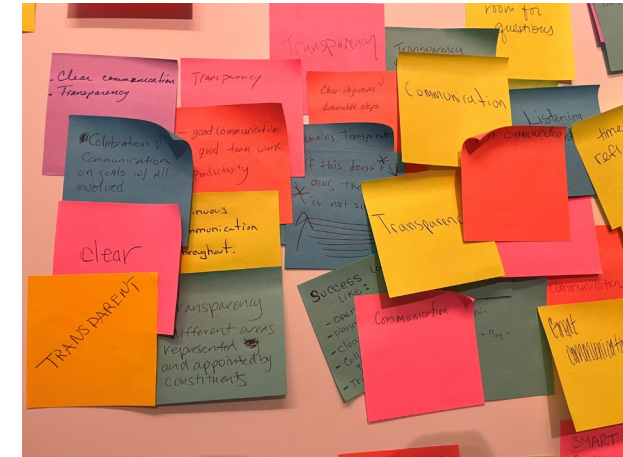
Madera Community College 2035

OPENING DAY

**WHAT WILL A
SUCCESSFUL PLANNING
PROCESS LOOK LIKE?**



OPENING DAY

[illegible]

Madera Community College 2035

OPENING DAY

WHAT WILL A SUCCESSFUL PLANNING PROCESS LOOK LIKE?

COLLABORATIVE

- Cross-disciplinary participatory governance
- Teamwork & accountability
- Open discussions

ALIGNED + INTEGRATED

- Student-centered
- Strong leadership
- Values-driven
- Cohesive vision

INCLUSIVE + COLLEGIAL

- Positive, respectful, & supportive culture
- Open-mindedness
- Inclusive communication & engagement

EFFECTIVE + EFFICIENT

- Data-informed
- Detailed planning
- Timely execution

CLEAR + TRANSPARENT

- Clear, open communication
- Defined purpose
- Clear roles & responsibilities
- Clear structure & organization

MEASURABLE OUTCOMES

- Clearly defined & prioritized goals
- Realistic expectations
- Flexibility & adaptability
- Process for ongoing evaluation

A photograph of three young women sitting at a green outdoor table, smiling and looking at papers. The woman on the left has long blonde hair and is wearing a tie-dye shirt. The woman in the middle has long brown hair and is wearing a white and orange shirt. The woman on the right is partially visible, wearing a black headband and a floral shirt. In the background, a man in a hat and a woman are standing near a building. The scene is outdoors with greenery and a building in the background.

Madera Community College 2035: Education Plan

Madera Community College 2035

PURPOSE

What purpose will Madera Community College 2035 serve?

NORTH STAR

Provide direction and focus

GOALS

Guide the College on how we can plan and execute our goals

CONSISTENCY

Collegewide consistency

IDENTITY

Student centered
Equity focused

INTEGRATION

Alignment, clear goals, complete objectives

RESOURCE ALLOCATION

Framework prioritized new initiatives or programs

A background image showing a man and a woman working at a desk. The man, on the right, has a beard and is wearing a yellow shirt with suspenders and a tie. He is holding a pen and looking at a small notebook. The woman, on the left, is wearing a dark top and is looking down at a large sheet of paper. They are in an office setting with a whiteboard and some framed pictures on the wall.

Madera (

WHAT WILL

Integrated Planning Process

Values, Vision, and Mission

Implications for Planning

- Internal and External Data Trends
- Trend Assumptions
- Challenges and Opportunities

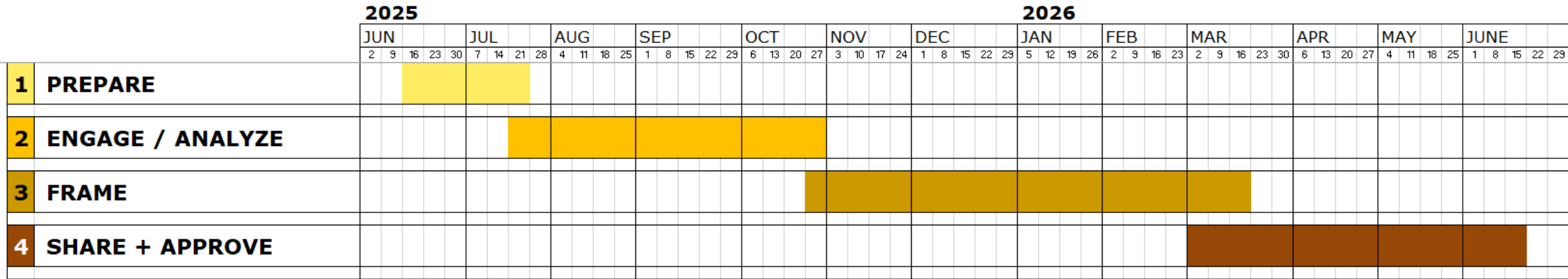
Long-term (ten-year) strategic goals

Five-year objectives and actions (2025-30 and 2030-35)

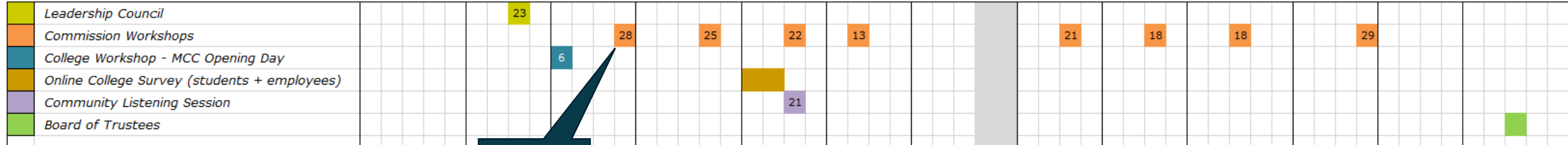
Planning Roadmap



PLANNING ROADMAP



PARTICIPATION



**We are
here**

Commission Role & Responsibilities



Role & Responsibilities

COMMISSION

COMMIT to attend and participate at all Commission workshops (Aug-Mar):

- *Review values, mission, and vision*
- *Review and discuss trends and forecast data, challenges, and opportunities*
- *Draft college strategic goals*
- *Draft objectives and actions aligned to each goal*
- *Review the draft Madera Community College 2035: Education Plan*
- *Review constituent recommendations*

PARTICIPATE as a collegewide representative (not individual goals)

WORK collegially with the other commission members

ACT as a communication liaison to campus constituent groups



A group of people are seated around a large table in a workshop setting, engaged in a discussion. In the foreground, a woman with red hair tied back is looking at a large diagram on the table. The diagram is titled "Discussion" and features a central flowchart with various boxes and arrows, surrounded by handwritten notes and sticky notes. Other participants are visible in the background, some looking at the diagram and others talking. The room has a casual, collaborative atmosphere with people standing and moving around.

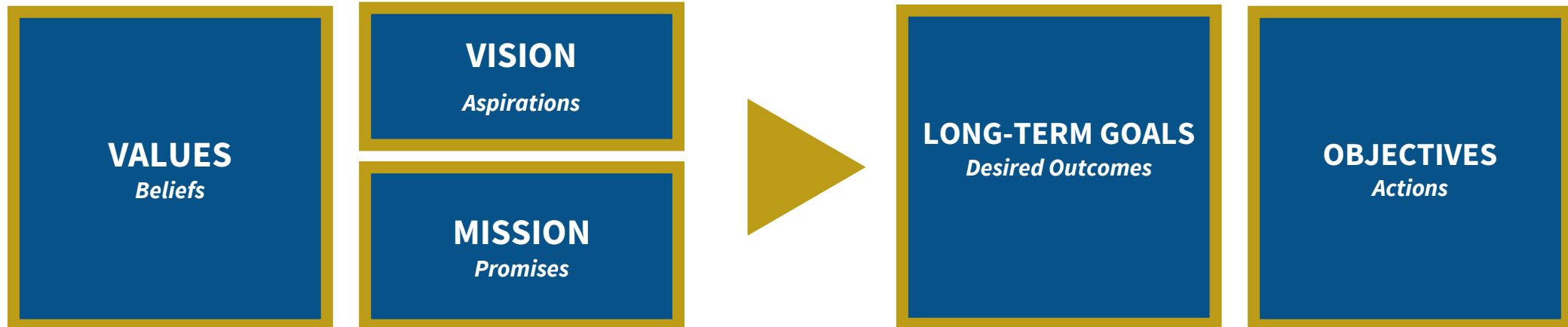
Integrated Planning

PLANNING TERM DEFINITIONS

The foundational planning pieces in an integrated planning model are both informed by and inform other elements.

- An institution's **VALUES** or belief system describe the behaviors expected of those within the institution. These core beliefs are embedded in the institutional vision, mission, long-term goals, and strategies.
- The **VISION** captures the institution's aspiration to be the best it can be, and the **MISSION** identifies what the institution promises to deliver to its communities. These promises are used to organize data that measure if the institution is delivering on its promises.

- Research on institutional performance identifies gaps and challenges, which are the specific issues on which the institution has room to increase its fulfillment of the mission promises. These gaps and challenges are the foundation for **LONG-TERM GOALS**.
- **OBJECTIVES** are specific steps that will be used to achieve the long-term goals and are developed to align with the institutional values, vision, mission, and long-term goals.



VALUES

OPENING DAY DISCUSSIONS



VALUES

Madera Community College Values Student Success Through:

*Which of these values resonate with you?
(Place dots on your top 3)*

CONNECTION

is cross-campus and community engagement intended to establish long-lasting relationships.

COLLABORATION

is working toward shared goals through effective partnerships by utilizing teamwork, participation, and appreciation of diverse ideas and perspectives.

EQUITY

is about fairness; an awareness of and a willingness to remove systemic and institutional barriers and provide inclusive resources.

INCLUSIVITY

is a commitment to intentionally create an environment that cultivates, embraces, and celebrates diversity.

TRUST

is established by mutual respect, supportive interactions, and a safe environment.

ACCOUNTABILITY

is ensuring academic and fiscal integrity through transparent policies and purposeful communication.

VALUES

*Which of these values resonate with you?
(Place dots on your top 3)*

Madera Community College Values Student Success Through:

CONNECTION

is cross-campus and community engagement intended to establish long-lasting relationships.

COLLABORATION

is working toward shared goals through effective partnerships by utilizing teamwork, participation, and appreciation of diverse ideas and perspectives.

EQUITY

is about fairness; an awareness of and a willingness to remove systemic and institutional barriers and provide inclusive resources.

INCLUSIVITY

is a commitment to intentionally create an environment that cultivates, embraces, and celebrates diversity.

TRUST

is established by mutual respect, supportive interactions, and a safe environment.

ACCOUNTABILITY

is ensuring academic and fiscal integrity through transparent policies and purposeful communication.

VALUES

Madera Community College Values Student Success Through:



VALUES

Madera Community College Values Student Success Through:

CONNECTION

We value cross-campus and community engagement *to create long-lasting relationships*

COLLABORATION

We value teamwork, active participation, partnerships, and diverse perspectives *and ideas to reach shared goals*

EQUITY + INCLUSIVITY

We value supportive and inclusive environments that foster fairness and remove institutional barriers

TRUST + ACCOUNTABILITY

We value mutual respect, supportive interactions, and a safe environment while ensuring academic and fiscal integrity *through transparent policies and purposeful communication*

STUDENT-CENTERED ENGAGEMENT

We value active learning, critical thinking, and student voices *to support students in achieving their educational goals*

- ACCESSIBILITY
- RELEVANCE TO COMMUNITY
- RESPECT
- SUSTAINABILITY
- INNOVATION
- EMPOWERMENT
- MENTORING
- DATA
- RESOURCES
- LEADERSHIP EDUCATION
- ANTI-RACISM
- CREATIVE TECHNOLOGY
- FAIRNESS
- DIGNITY
- SHARED GOVERNANCE
- COMMUNICATION

VISION



VISION

20% OF THE
TABLES SAY NO
CHANGE

*Does this capture the MCC
aspirations for the future?*

***Madera Community College builds effective
partnerships, strengthens communities, and
transforms lives.***

VISION

WORD CHANGES

***Madera Community College builds effective
partnerships, strengthens communities, and***

transforms lives.

***STRENGTHENS;
BETTERS***

***IMPROVES /
IMPROVES ALL
LIVES***

***TRANSFORMS
LIVES PREPARING
STUDENTS FOR
THEIR FUTURE***

***TRANSFORMS STUDENTS'
LIVES; TRANSFORMS LIVES
THROUGH EDUCATION***

***EMPOWERS STUDENTS BY
TRANSFORMING LIVES***

***PROVIDES SKILLS, TOOLS,
AND RESOURCES TO
TRANSFORM LIVES***

VISION

WORD CHANGES



VISION

REVISIONS & VARIATIONS

SHORTENED; REMOVED "PARTNERSHIPS"

Madera Community College strengthens communities by transforming lives.

Madera Community College strengthens communities and transforms students' lives.

Madera Community College strives to transform lives; thereby strengthening communities.

Madera Community College strengthens communities and transforms lives.

REVISED

Madera Community College builds effective partnerships; transforms communities; and strengthens lives.

Madera Community College builds effective partnerships with the community to transform lives.

Madera Community College is a higher educational vehicle for (social/economic mobility) transforming lives and strengthening communities.

REORDERED

Madera Community College strengthens communities; builds effective partnerships; and transforms lives.

MISSION



MISSION

*Do these promises still resonate?
Is anything missing?*

Empowering our students to succeed in an ever-changing world.

- ① We proudly provide quality instruction and strong community partnerships that support students' academic and workforce goals.
- ② We offer innovative and life-changing opportunities in a diverse, inclusive and equitable environment.
- ③ We value our students' personal and social growth through responsive and interactive college experiences.
- ④ We inspire hope and promote a passion for learning.
- ⑤ We transform students' lives through high quality college programs and services resulting in degrees, certificates, transfer programs, and career skills.

MISSION

TOO LONG;
SHOULD BE
SHORT AND TO
THE POINT

Empowering our students to succeed in an ever-changing world.

- ① We proudly provide quality instruction and strong community partnerships that support students' academic and workforce goals.
- ② We offer innovative and life-changing opportunities in a diverse, inclusive and equitable environment.
- ③ We value our students' personal and social growth through responsive and interactive college experiences.
- ④ We inspire hope and promote a passion for learning.
- ⑤ We transform students' lives through high quality college programs and services resulting in degrees, certificates, transfer programs, and career skills.

We provide transparency by sharing the success and continued growth of our graduating students.

ADD

We equip our students with skills, confidence, and adaptability to lead, create and contribute meaningfully in their community – today and in the future.

ADD

MISSION

15/25
TABLES
SUGGESTED
NO CHANGE

Empowering our students to succeed in an ever-changing world.

1

STRIVE TO
We proudly provide quality instruction and

GROWING WORKFORCE?
~~strong~~ community partnerships that support

LIFE OR CAREER
students' academic and ~~workforce~~ goals.

DELETE

DEFINE

CHANGE TO "UPDATED"

**COMBINE QUALITY
INSTRUCTION AND
SERVICES**

**NEED TO WORK ON
BUILDING
MORE/STRONGER
PARTNERSHIPS**

WHO DO WE HAVE STRONG PARTNERSHIP WITH?

MISSION

14/25
TABLES
SUGGESTED
NO CHANGE

Empowering our students to succeed in an ever-changing world.

2

We offer ~~innovative~~ and ~~life-changing~~
opportunities in a ~~diverse~~, inclusive and
equitable environment.

CHANGE TO
"QUALITY
INSTRUCTION"

PROVIDE

KEEP

DELETE

DELETE

KEEP

BE MORE
SPECIFIC
ABOUT
"INNOVATIVE
AND LIFE
CHANGING"

DELETE; WE ARE
NOT THAT DIVERSE

ADD: ACCESSIBLE,
ANTI-RACIST

ADD: SAFE AND
WELCOMING (YOU
BELONG HERE)

MISSION

16/25
TABLES
SUGGESTED
NO CHANGE

Empowering our students to succeed in an ever-changing world.

DELETE THE
WHOLE
SENTENCE

3

**SUPPORT/DEVELOP
ALL STUDENTS'**

We ~~value our students'~~ personal and social

KEEP

KEEP

DELETE

CHANGE TO
"VARIOUS"

growth through responsive and ~~interactive~~

college experiences.

ADD: SUPPORT
SERVICES, HOLISTIC
DEVELOPMENT

DEFINE

CHANGE TO "THROUGH A
RESPONSIVE, ADAPTIVE,
AND INTERACTIVE
COLLEGE CULTURE"

MISSION

Empowering our students to succeed in an ever-changing world.

17/25
TABLES
SUGGESTED
NO CHANGE

DELETE THE
WHOLE
SENTENCE

CHANGE TO "WE
HOPE TO INSPIRE"

CHANGE TO
"ENGAGE WITH
STUDENTS TO..."

CHANGE TO
"CREATE A SENSE
OF BELONGING"

4

PROMOTE

We inspire hope and promote a passion

for learning.

ADD: EDUCATIONAL
GROWTH, WHILE
ADVANCING
WORKFORCE GOALS

MISSION

17/25
TABLES
SUGGESTED
NO CHANGE

Empowering our students to succeed in an ever-changing world.

IS THIS
REPETITIVE
WITH
BULLET #1?

5

IMPROVE; EDUCATE

DELETE

KEEP

We ~~transform~~ students' lives through ~~high~~ quality

DEFINE

college programs and services resulting in degrees,
certificates, transfer programs, and career skills.

Next Steps



Ongoing Communication

MULTIPLE MODES

Project Webpage

President's Communications

Meeting Updates

- College Council
- Committee meetings
- Division meetings
- Department meetings



[Home](#) / [About Us](#) / [Accreditation](#) / [Madera Community College 2035: Education Plan](#)

Madera Community College 2035: Education Plan

Introduction

Madera Community College is in the process of developing the *Madera Community College 2035: Education Plan*. The plan will include the College values, vision and mission along with 10-year collegewide strategic goals and 5-year supporting action steps that will form a roadmap for achieving the College Mission.

The *Madera Community College 2035: Education Plan* will align with State Center Community College District's SCCCDC Vision 2035 and the California Community College Chancellor's Office (CCCCO) Vision 2030.

This comprehensive educational plan will provide the overarching structure for all institutional planning and will serve as a guide for the College's ongoing integrated planning.

Developing the new *Madera Community College 2035: Education Plan* is an exciting opportunity for Madera Community College constituents to spend time reflecting upon past goals and envisioning the future. MCC 2035 reflects our commitment to data-informed, student-centered planning that meets the demands of an ever-changing world.

PLANNING ROADMAP

[illegible]

What's Next



Madera Community College 2035: Education Plan

Commission Workshop #1
August 28, 2025